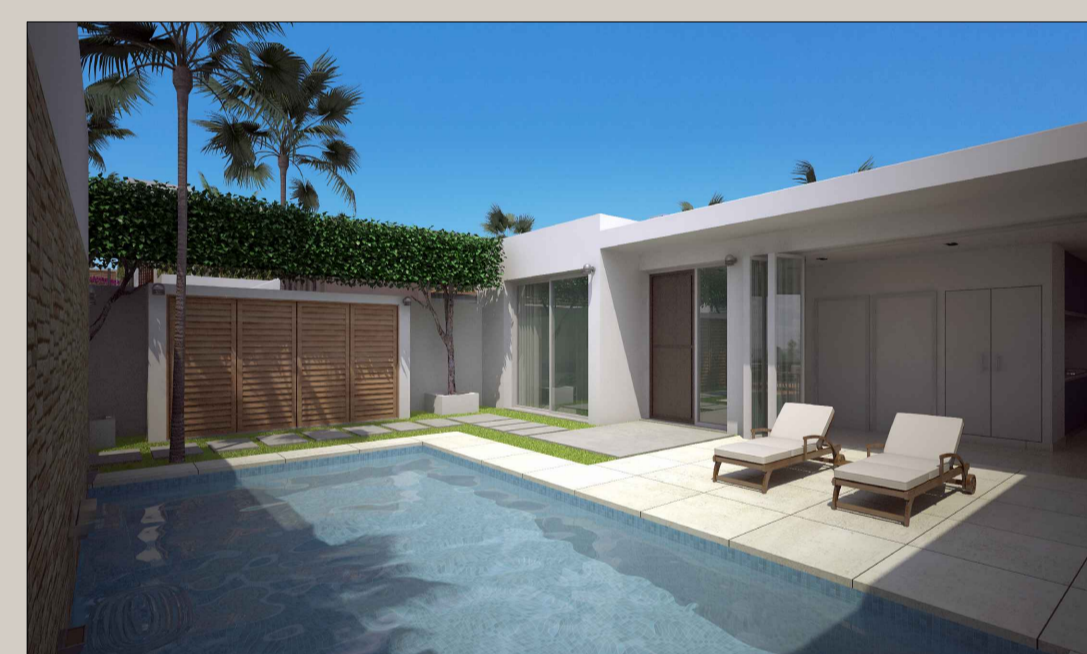
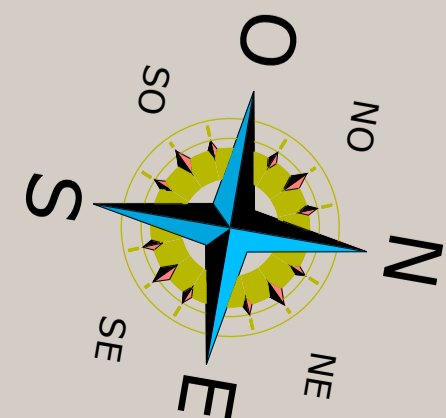




BASEMENT PLAN



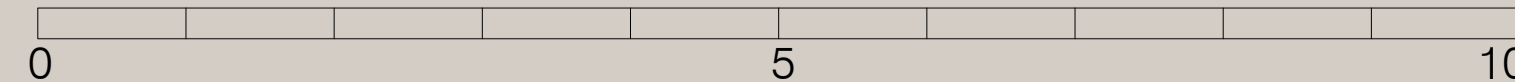
INFORMATION / SALES
 info@blueskyriviera.com
 +00 34 634 06 70 30
 www.blueskyriviera.com



Sky EasyLiving 04

Urb. Riviera del Sol - Mijas - Malaga - Spain

SCALE (m)



LIST OF SURFACES	(m2)
INTERIOR SURFACE	149.01 m2
FULL BUILT SURFACE	289.68 m2
TERRACES	87.81 m2
PLOT SIZE	288 m2